



OUR FACTORY

CIVOCOL STEEL (PRIVATE) LIMITED

CIVOCOL STEEL (PRIVATE) LIMITED

20XX

ON THESE BEAMS, WE'RE BUILDING DREAMS



ABOUT US

CIVOOOL Steel Pvt. Limited, a part of CIVOOOL Group of companies, have been marking its strong footprints in construction sector of Pre-Engineered Steel Buildings (PEB) across Pakistan since 2013. The company has state of art manufacturing facility having automated SAW welding lines, profile machines, laser cutters, shot blasting plant at Raiwind Manga road, Lahore vis-a-vis sales & marketing offices in Lahore & Islamabad.

CIVOOOL Steel Pvt. Limited has inspirational team with high end technical expertise & exposure that helps to deliver value added & cost effective engineered solutions. CIVOOOL team is customer focused & providing outclass services during proposal stage, project & SITE mobilization & after sales services.

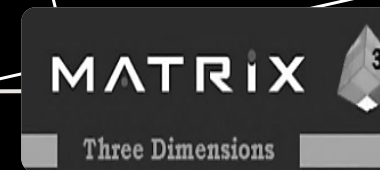
CIVOOOL Steel Pvt. Limited is duly registered and active income & sales tax payer, moreover our manufacturing facility is approved by highest authority of Pakistan Armed Forces and we are registered as C-2 manufacturer construction firm with Pakistan Engineering Council acquiring BC-01 specialized PEB Code.

CIVOOOL Steel Pvt. Limited got license of specialized PEB software "MATRIX" for efficient & better design & detailing of steel buildings as per customer requirements & geographic conditions.

The screenshot displays the MATRIX software interface, divided into several sections:

- Building Parameters:** Includes fields for Building Width (0/0), Ridge Distance (10), Left Eave Ht (5), Right Eave Ht (5), Bay Spacing (5 6 1@7.5 6 5), Frame Type (RF), Wind Columns (5 5 5), Bracing @ (2 5), Purlin Arrangement (Balance at Eave: .66 @ 1.5, At Ridge: 0.35, .66), and Girt Arrangement (Balance at Eave: .00 @ 2, Balance at Eave: .00).
- Others:** Includes Open For Block Wall (m) (3), Steel Line (mm) (350), Left End Wall Open (3), Right End Wall Open (3), NS Wall Open (3), FS Wall Open (3), Number of D_Spout (1), Roof Sheeting (None), Wall Sheeting (None), Mezzanine Deck (None), End Wall Girt (By_Pass), Side Wall Girt (By_Pass), and Roof Purlin (By_Pass).
- Gravity Loads:** DL (kN/m2) 0.1, Frame LLr (kN/m2) 0.57, Purlin LLr (kN/m2) 0.96, CL F/P (kN/m2) 0, Snow Load (kN/m2) 0, Temperature (oC) 0.
- Wind:** Speed (km/h, 3 Sec G) 130, Importance Factor Iw 1.00, Opening Condition Enclosed, Exposure C.
- Seism:** Spectral Acc 0, Importance Factor Is 1.00, Soil Classification D, R Factor 3.5, Long Period (Sec) 4, UBC-97.
- Design Code:** AISC 2005-1, Building Code ASCE 7-05, Frame Fy (MPa) 345, Purlin Fy (MPa) 345, Eave Strut Type C.
- Connection Bolts:** A325, Anchor Bolts A307, Minimum Plate Thickness (mm) 0, Minimum Z Section 200Z15, Minimum C Section C89-41.3.

Below the parameters is a 3D model of a steel building frame labeled "Frame 1, 6", showing the structural layout with columns, beams, and purlins. A compass rose indicates North, and the software name "MATRIX" and "Three Dimensions" are visible in the bottom right corner.



Every building that we design, manufacture and erect is created with the pleasure and needs of occupants in mind. CIVOOOL has been CREATED realizing the remarkable features and attributes that Pre-engineered steel buildings possess, that's why these buildings are more in demand. CIVOOOL is innovative and dynamic organization which has numerous industrial, commercial, govt. & institutional projects to its credits. CIVOOOL Team are passionate and empowered professionals to execute fast & reliable projects with mission to re-build, innovate, and re-imagine the Pakistan's construction industry.



www.civool.com

CIVOOOL STEEL





www.civool.com

CIVOOOL STEEL



www.civool.com

CIVOOOL STEEL



www.civool.com

CIVOOOL STEEL



www.civool.com

CIVOOOL STEEL



www.civool.com

CIVOOOL STEEL



www.civool.com

CIVOOOL STEEL



www.civool.com

CIVOOL STEEL



www.civool.com

CIVOOOL STEEL



www.civool.com

CIVOOOL STEEL



www.civool.com

CIVOOOL STEEL



www.civool.com

CIVOOOL STEEL



www.civool.com

CIVOOOL STEEL



www.civool.com

CIVOOOL STEEL



www.civool.com

CIVOOOL STEEL



www.civool.com

CIVOOOL STEEL



www.civool.com

CIVOOOL STEEL



www.civool.com

CIVOOOL STEEL



www.civooool.com

CIVOOOL STEEL



www.civool.com

CIVOOOL STEEL



www.civool.com

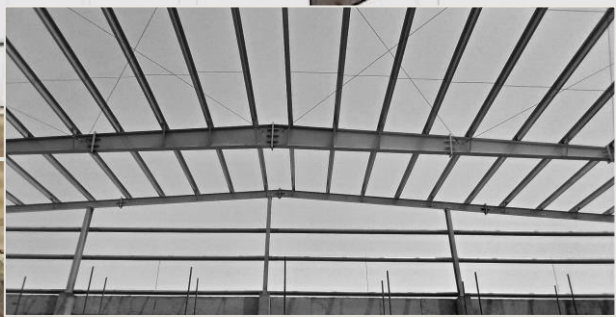
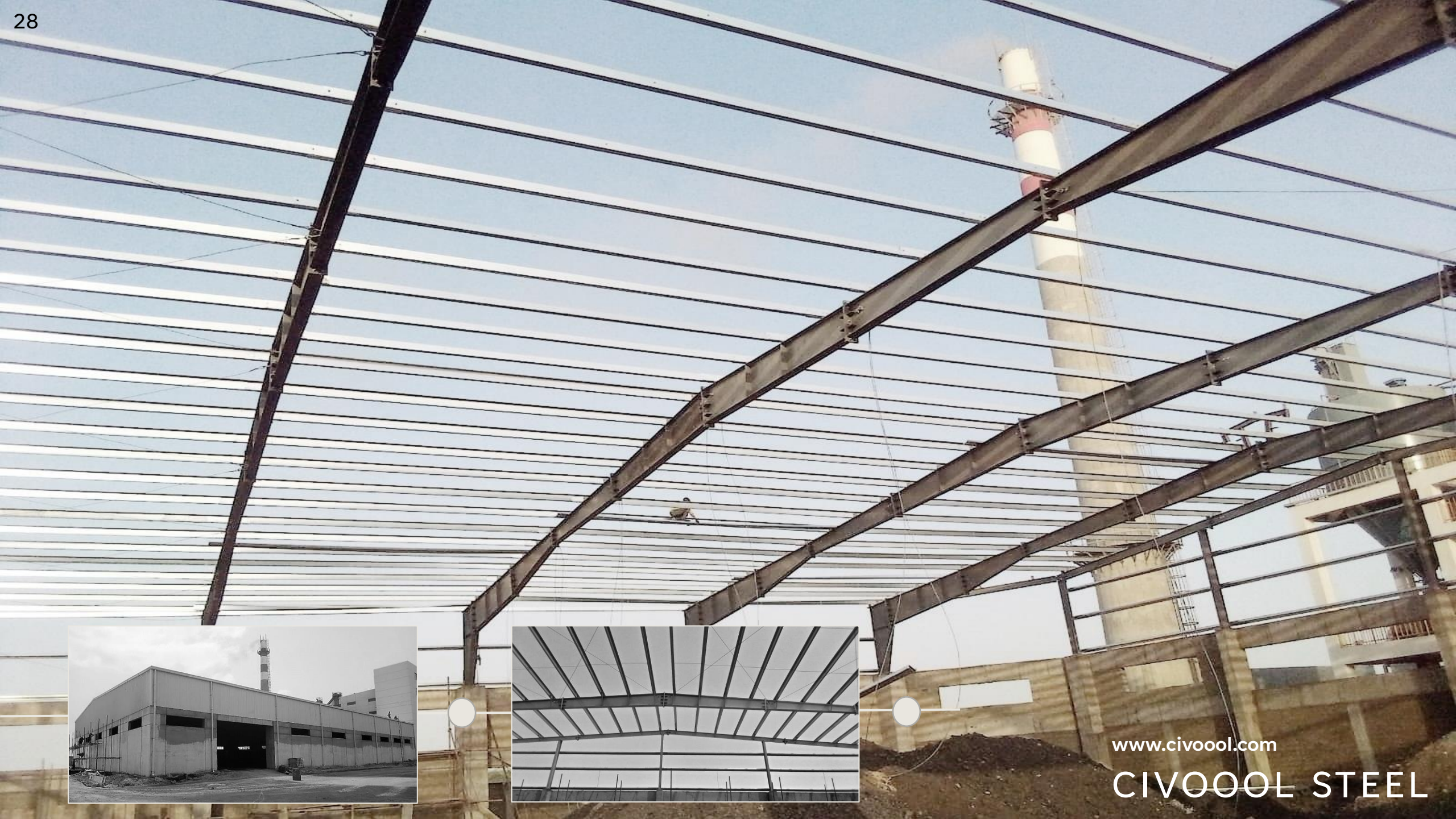
CIVOOOL STEEL





www.civooool.com

CIVOOOL STEEL



www.civooool.com

CIVOOOL STEEL



www.civool.com

CIVOOOL STEEL



www.civool.com

CIVOOOL STEEL



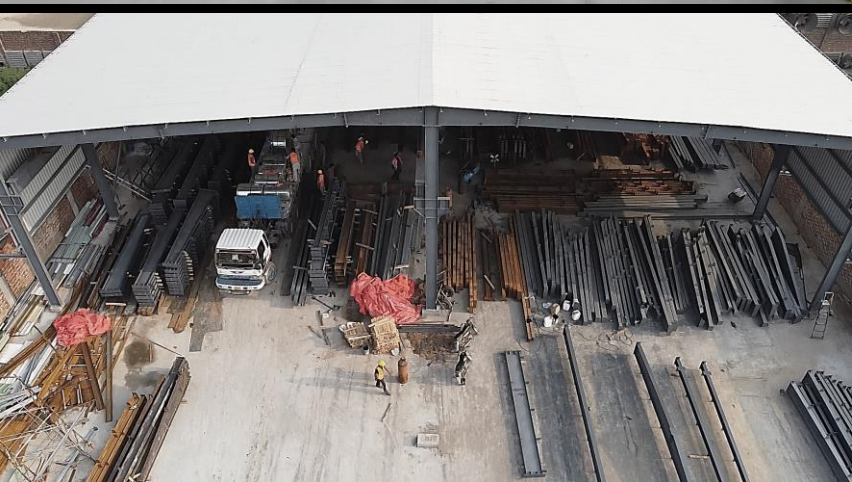
www.civooool.com

CIVOOOL STEEL

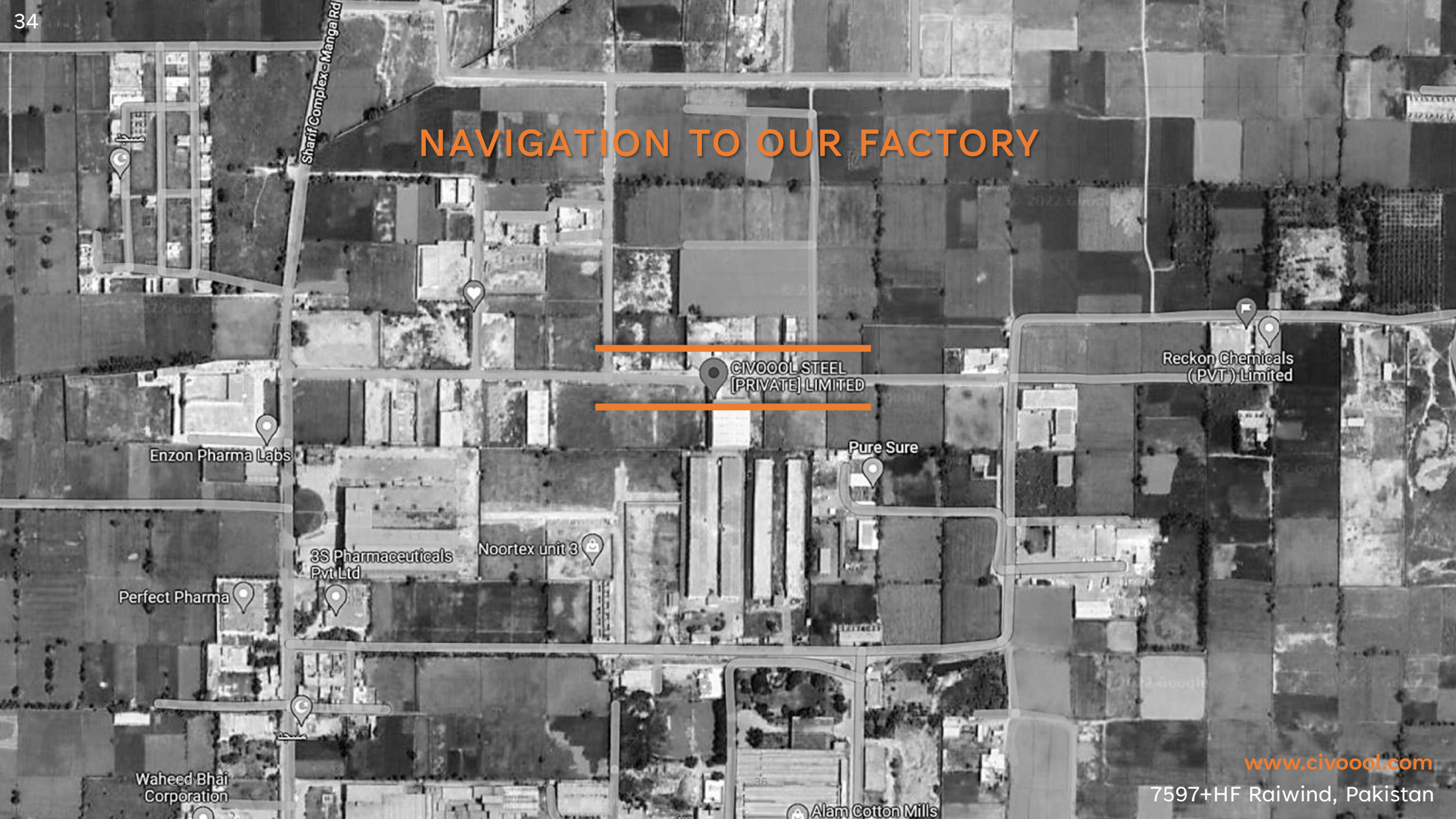


www.civool.com

CIVOOOL STEEL



NAVIGATION TO OUR FACTORY



CIVOOL STEEL
(PRIVATE) LIMITED

Reckon Chemicals
(PVT) Limited

Enzon Pharma Labs

Pure Sure

3S Pharmaceuticals
Pvt Ltd

Noortex unit 3

Perfect Pharma

Waheed Bhai
Corporation

Alam Cotton Mills

www.civool.com

7597+HF Raiwind, Pakistan

CONTACT US

CIVOOL STEEL [PRIVATE] LIMITED

Factory & Head Office: 5-km Sharif Complex - Manga link road Lahore

Lahore Sales Office: H#238 Block J1 Wapda Town Lahore

Islamabad Sales Office: 209 Block 05, Defence Residency, DHA Ph-II Islamabad

Contact: 0300-6653-427, 0321-8856-894, 0306-0425-982

Landline: 0312-4857-060, 0423-5395-381

Email: info@civool.com

Web: www.civool.com

